

# Discharge Measurement Summary

**Site name** ECanal4  
**Site number** 02  
**Operator(s)** TMiller  
**File name** EastCanal\_20230509\_1016.ft  
**Comment**

<b>Start time</b>	5/9/2023 10:16 AM	<b>Sensor type</b>	Top Setting
<b>End time</b>	5/9/2023 10:53 AM	<b>Handheld serial number</b>	FT2H2219029
<b>Start location latitude</b>	42.809	<b>Probe serial number</b>	FT2P2219014
<b>Start location longitude</b>	-118.869	<b>Probe firmware</b>	1.30
<b>Calculations engine</b>	FlowTracker2	<b>Handheld software</b>	1.7

<b># Stations</b>	<b>Avg interval (s)</b>	<b>Total discharge (m<sup>3</sup>/s)</b>
22	40	0.9505

<b>Total width (m)</b>	<b>Total area (m<sup>2</sup>)</b>	<b>Wetted Perimeter (m)</b>
3.719	1.38811	4.276

<b>Mean SNR (dB)</b>	<b>Mean depth (m)</b>	<b>Mean velocity (m/s)</b>
40	0.373	0.6847

<b>Mean temp (°C)</b>	<b>Max depth (m)</b>	<b>Max velocity (m/s)</b>
6.576	0.448	0.9190

Discharge Uncertainty		
Category	ISO	IVE
Accuracy	1.0%	1.0%
Depth	0.1%	1.9%
Velocity	0.4%	1.3%
Width	0.1%	0.1%
Method	1.8%	
# Stations	2.3%	
Overall	3.1%	2.5%

<b>Discharge equation</b>	Mid Section
<b>Discharge uncertainty</b>	IVE
<b>Discharge reference</b>	Rated

Data Collection Settings	
<b>Salinity</b>	0.000 PSS-78
<b>Temperature</b>	-
<b>Sound speed</b>	-
<b>Mounting correction</b>	0.000 %

## Summary overview

No changes were made to this file  
Quality control warnings



# Discharge Measurement Summary

**Site name** ECanal4  
**Site number** 02  
**Operator(s)** TMiller  
**File name** EastCanal\_20230509\_1016.ft  
**Comment**

## Station Warning Settings

**Station discharge OK**

Station discharge < 5.00%

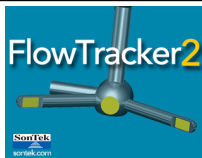
**Station discharge caution**

5.00% >= Station discharge < 10.00%

**Station discharge warning**

Station discharge >= 10.00%



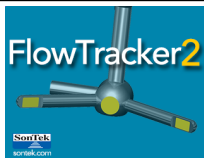


# Discharge Measurement Summary

**Site name** ECanal4  
**Site number** 02  
**Operator(s)** TMiller  
**File name** EastCanal\_20230509\_1016.ft  
**Comment**

## Measurement results

St#	Time	Location (m)	Method	Depth (m)	%Depth	Measured Depth (m)	Samples	Velocity (m/s)	Correction	Mean Velocity (m/s)	Area (m <sup>2</sup> )	Flow (m <sup>3</sup> /s)	%Q	
0	10:16 AM	0.549	None	0.000	0.0000	0.000	0	0.0000	1.0000	0.5460	0.00000	0.0000	0.00	✓
1	10:17 AM	0.701	0.6	0.408	0.6000	0.245	80	0.5460	1.0000	0.5460	0.06847	0.0374	3.93	✓
2	10:20 AM	0.884	0.6	0.448	0.6000	0.269	80	0.8046	1.0000	0.8046	0.08194	0.0659	6.94	✓
3	10:22 AM	1.067	0.6	0.442	0.6000	0.265	80	0.8739	1.0000	0.8739	0.08083	0.0706	7.43	✓
4	10:24 AM	1.250	0.6	0.421	0.6000	0.252	80	0.8267	1.0000	0.8267	0.07692	0.0636	6.69	✓
5	10:28 AM	1.433	0.6	0.396	0.6000	0.238	80	0.8328	1.0000	0.8328	0.07246	0.0604	6.35	✓
6	10:30 AM	1.615	0.6	0.396	0.6000	0.238	80	0.8645	1.0000	0.8645	0.07246	0.0626	6.59	✓
7	10:32 AM	1.798	0.6	0.366	0.6000	0.219	80	0.8948	1.0000	0.8948	0.06689	0.0599	6.30	✓
8	10:33 AM	1.981	0.6	0.366	0.6000	0.219	80	0.8664	1.0000	0.8664	0.06689	0.0580	6.10	✓
9	10:35 AM	2.164	0.6	0.341	0.6000	0.205	80	0.8851	1.0000	0.8851	0.06243	0.0553	5.81	✓
10	10:36 AM	2.347	0.6	0.341	0.6000	0.205	80	0.9190	1.0000	0.9190	0.06243	0.0574	6.04	✓
11	10:37 AM	2.530	0.6	0.335	0.6000	0.201	80	0.8588	1.0000	0.8588	0.06132	0.0527	5.54	✓
12	10:39 AM	2.713	0.6	0.351	0.6000	0.210	80	0.8101	1.0000	0.8101	0.06410	0.0519	5.46	✓
13	10:40 AM	2.896	0.6	0.366	0.6000	0.219	80	0.7974	1.0000	0.7974	0.06689	0.0533	5.61	✓
14	10:42 AM	3.078	0.6	0.390	0.6000	0.234	80	0.6615	1.0000	0.6615	0.07135	0.0472	4.97	✓
15	10:43 AM	3.261	0.6	0.396	0.6000	0.238	80	0.6472	1.0000	0.6472	0.07246	0.0469	4.93	✓
16	10:45 AM	3.444	0.6	0.421	0.6000	0.252	80	0.6018	1.0000	0.6018	0.07692	0.0463	4.87	✓
17	10:46 AM	3.627	0.6	0.402	0.6000	0.241	80	0.4931	1.0000	0.4931	0.07358	0.0363	3.82	✓
18	10:48 AM	3.810	0.6	0.411	0.6000	0.247	80	0.2168	1.0000	0.2168	0.07525	0.0163	1.72	✓
19	10:49 AM	3.993	0.6	0.396	0.6000	0.238	80	0.1211	1.0000	0.1211	0.06643	0.0080	0.85	✓
20	10:51 AM	4.145	0.6	0.351	0.6000	0.210	80	0.0117	1.0000	0.0117	0.04808	0.0006	0.06	✓
21	10:53 AM	4.267	None	0.000	0.0000	0.000	0	0.0000		0.0117	0.00000	0.0000	0.00	✓



# Discharge Measurement Summary

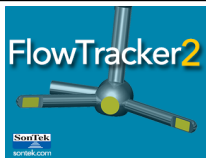
**Site name** ECanal4  
**Site number** 02  
**Operator(s)** TMiller  
**File name** EastCanal\_20230509\_1016.ft  
**Comment**

## Quality Control Settings

**Maximum depth change** 50.00%  
**Maximum spacing change** 100.00%  
**SNR threshold** 10 dB  
**Standard error threshold** 0.0100 m/s  
**Spike threshold** 10.00%  
**Maximum velocity angle** 20.0 deg  
**Maximum tilt angle** 5.0 deg

## Quality control warnings

St#	Time	Location (m)	Method	Depth (m)	%Depth	Measured Depth (m)	Warnings
1	10:17 AM	0.701	0.6	0.408	0.6000	0.245	Water Depth > QC,Standard Error > QC
2	10:20 AM	0.884	0.6	0.448	0.6000	0.269	Standard Error > QC
3	10:22 AM	1.067	0.6	0.442	0.6000	0.265	Standard Error > QC
4	10:24 AM	1.250	0.6	0.421	0.6000	0.252	Standard Error > QC
5	10:28 AM	1.433	0.6	0.396	0.6000	0.238	Standard Error > QC
6	10:30 AM	1.615	0.6	0.396	0.6000	0.238	Standard Error > QC
7	10:32 AM	1.798	0.6	0.366	0.6000	0.219	Standard Error > QC,Velocity Angle > QC
8	10:33 AM	1.981	0.6	0.366	0.6000	0.219	Standard Error > QC
9	10:35 AM	2.164	0.6	0.341	0.6000	0.205	Standard Error > QC
10	10:36 AM	2.347	0.6	0.341	0.6000	0.205	Standard Error > QC
11	10:37 AM	2.530	0.6	0.335	0.6000	0.201	Velocity Angle > QC
12	10:39 AM	2.713	0.6	0.351	0.6000	0.210	Velocity Angle > QC
14	10:42 AM	3.078	0.6	0.390	0.6000	0.234	Velocity Angle > QC
15	10:43 AM	3.261	0.6	0.396	0.6000	0.238	Standard Error > QC,Velocity Angle > QC
16	10:45 AM	3.444	0.6	0.421	0.6000	0.252	Standard Error > QC,Velocity Angle > QC
17	10:46 AM	3.627	0.6	0.402	0.6000	0.241	Standard Error > QC
18	10:48 AM	3.810	0.6	0.411	0.6000	0.247	Standard Error > QC
20	10:51 AM	4.145	0.6	0.351	0.6000	0.210	Boundary Interference,Beam SNRs Not Similar,SNR Threshold Variation
21	10:53 AM	4.267	None	0.000	0.0000	0.000	Water Depth > QC



# Discharge Measurement Summary

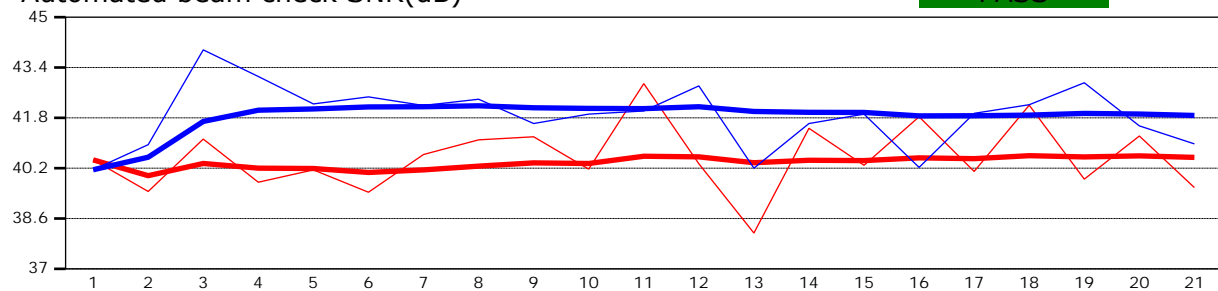
**Site name** ECanal4  
**Site number** 02  
**Operator(s)** TMiller  
**File name** EastCanal\_20230509\_1016.ft  
**Comment**

<b>Beam 1</b>	
<b>Beam 2</b>	

Automated beam check Start time 5/9/2023 10:15:58 AM

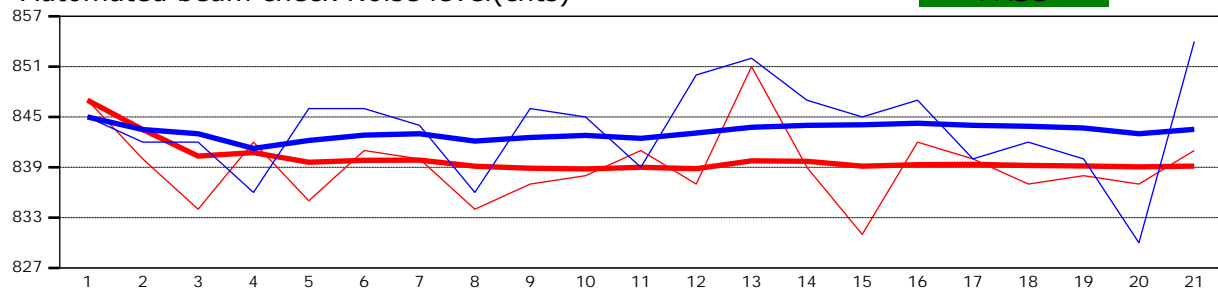
Automated beam check SNR(dB)

PASS



Automated beam check Noise level(cnts)

PASS



## Automated beam check Quality control warnings

No quality control warnings



# Discharge Measurement Summary

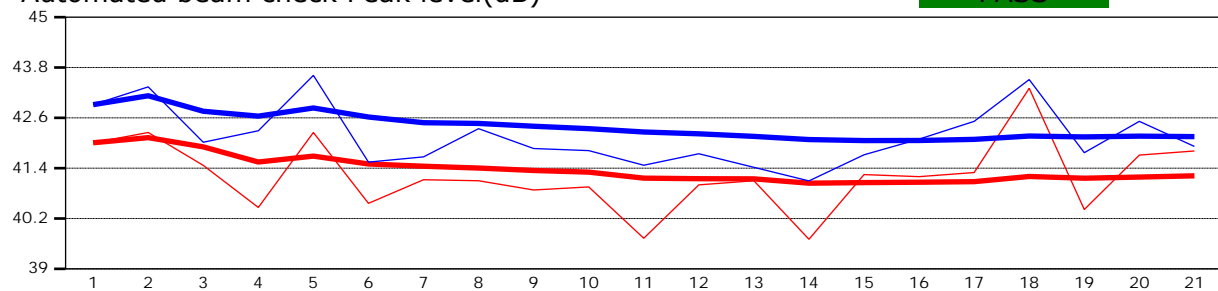
**Site name** ECanal4  
**Site number** 02  
**Operator(s)** TMiller  
**File name** EastCanal\_20230509\_1016.ft  
**Comment**

<b>Beam 1</b>	
<b>Beam 2</b>	

Automated beam check Start time 5/9/2023 10:15:58 AM

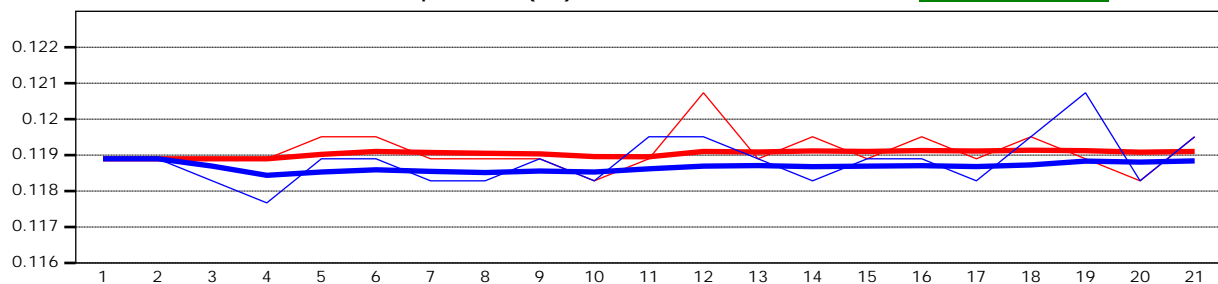
Automated beam check Peak level(dB)

**PASS**



Automated beam check Peak position(m)

**PASS**



## Automated beam check Quality control warnings

No quality control warnings